



SATELLINE-3AS EPIC in the municipal system of spatial information

A Municipal System of Spatial Information is being developed in Gdansk, Poland. It will constitute a basis of the management of the Municipal Rescue Services and Municipal Transport System. The project is based on the use of the Global Positioning System (GPS) together with a network of SATELLINE-3AS EPIC.

Pilot project of vehicle monitoring

In 2000, a network of GPS reference stations was installed in the city. The next year, a pilot project of fleet monitoring was launched, comprising 20 police vehicles. The exact location of the vehicles is determined using the DGPS technique. Each of the police cars is equipped with a **SATELLINE-3AS EPIC radio modem** with antenna. With this arrangement, it is possible to send data about the exact location and movement of the vehicles to the monitoring centre.

In the Monitoring Centre, the vehicles can be visualised on a digital map. The visualisation and management software provides the following functions:

- Simultaneous monitoring of a fleet of many vehicles, with individual identification on a digital map
- Reception and display of alarm signals coming from the cars
- Transmission of directives
- Creating and archiving databases pertaining to the monitored vehicles



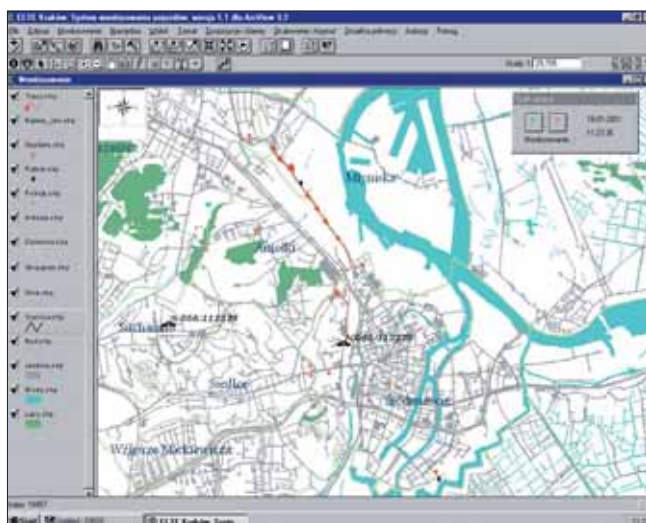
Monitoring centre at the Municipal Police Station in Gdansk

Enhancing urban transport management

The Spatial Information system can be extended for an unlimited number of vehicles. Its functionality is to be enhanced, in particular with respect to the registration of road incidents, and connection to the municipal centre of Rescue Alarm.

The main purpose of the Urban Transport Management System is to achieve a trouble-free passage of the urban transport vehicles through the city, monitoring the compliance with timetables, ensuring wireless communication with all the vehicles, and on-line collecting and processing of traffic-related data.

In addition to Rescue Services and Urban Transport, a Spatial Information system like the one developed in Gdansk can be utilised by several other institutions and organisations including, among others, the police, fire brigades, health services and land-surveying companies.



Monitoring the itinerary of a police patrol - an example



Satel Oy, Meriniitynkatu 17, P.O.Box 142,
 FIN-24101 Salo
 Tel. +358 02 777 7800, fax +358 02 777 7810,
 E-mail info@satel.fi
 www.satel.fi